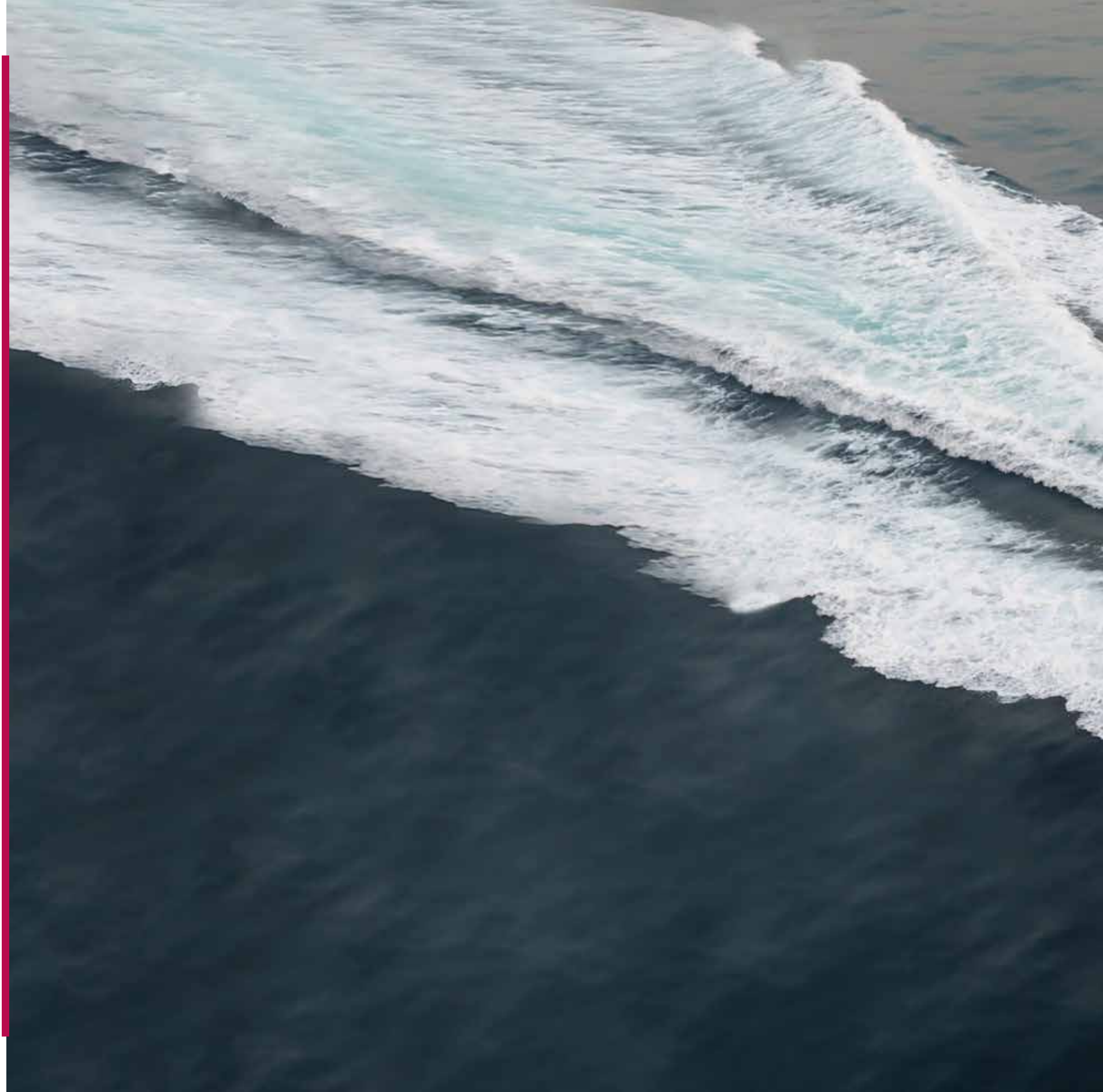


SIRENA  YACHTS

Power is visible now.

We spent years meticulously observing, learning, creating with only one objective in sight: to materialize a unique long range cruising experience.

The innovative hull design of Germán Frers accompanied with extensive tank testing created a journey never travelled before.













 **SIRENA 64**

Daring devotion

Full devotion towards creating incomparable as well as sensational living spaces has enabled us to design every inch of this boat livable and memorable.





64' MY INTERIORS

We can say that main concepts of Sirena Yachts interior design are COMFORT and LIGHT.

Our main priority was to create a warm and elegant space, which could mix high tech and handcrafting capabilities.

Basing on this, we designed a space where LIGHT and COMFORT are the main features, integrating with exteriors in a harmonious way of living the sea life.

Thanks to the building skills of Sirena Marine Shipyard, new technical solutions and extremely accurate handcrafted details have been implemented, always bearing in mind the full comfort of the owners and their guests.

The cabins and the whole boat are designed to suggest a serene elegance and a pleasant staying.

Interior design is defined by a skillful use of several tones of WHITE, carefully mixed with a touch of dark colour defining frames and panels; wood is oak, combined with wengè; a light and soft moquette on the floor amplifies space and underlines the design.

Tommaso Spadolini

DESIGN STUDIO SPADOLINI













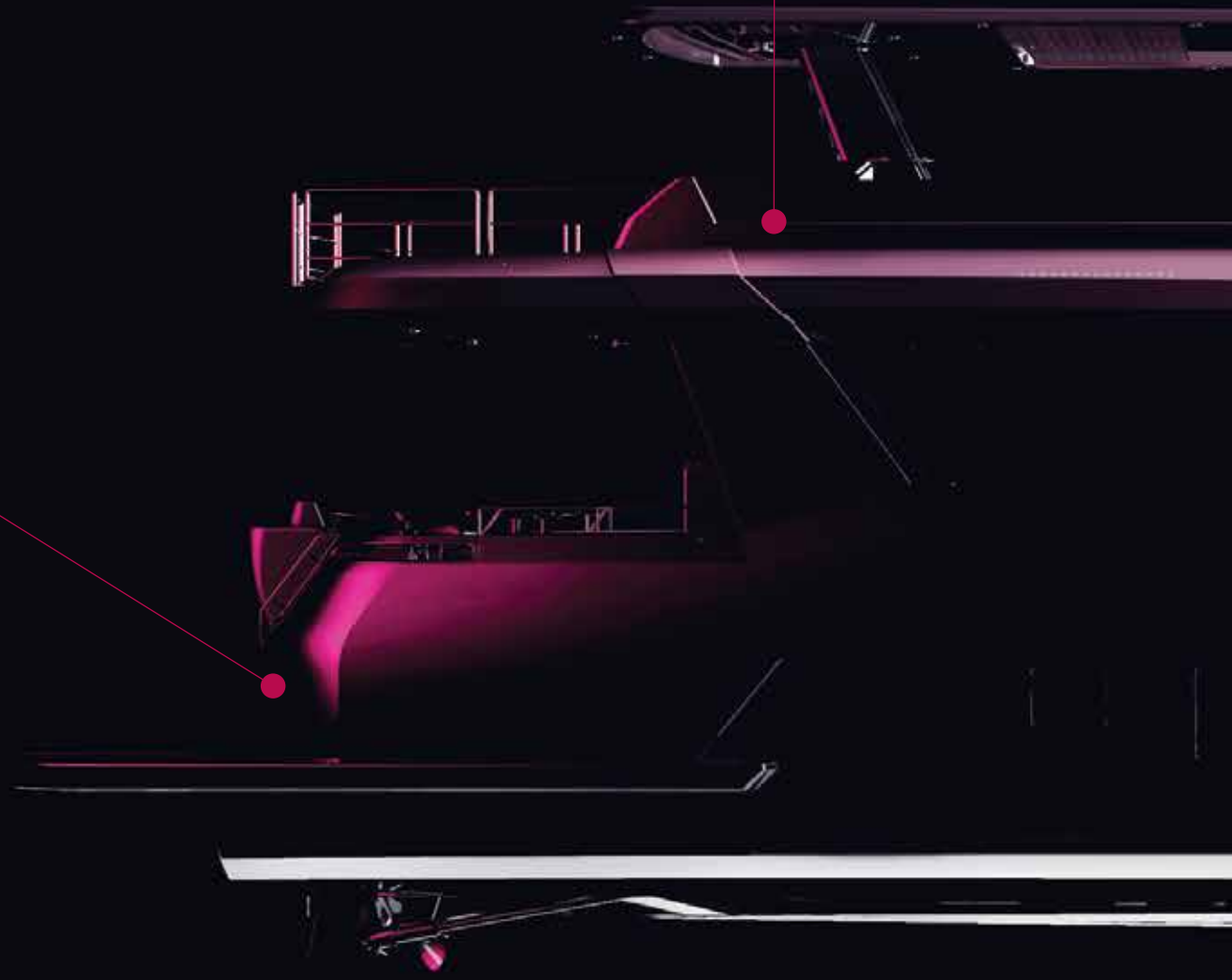
SIRENA 64

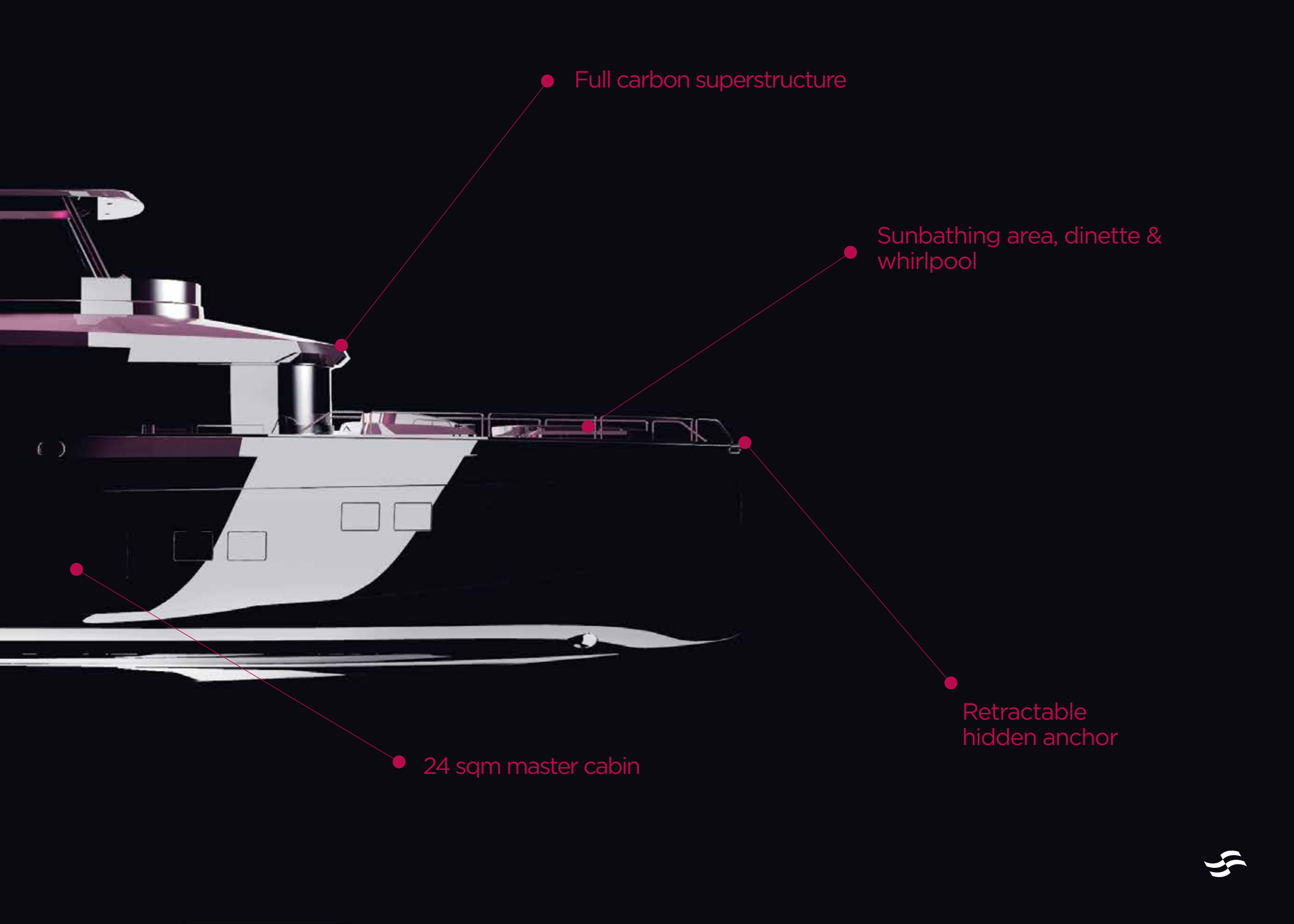
40 sqm Flybridge

Crew cabin with
engine room access

Lifting swimming platform

28 knots maximum speed
1200 Nm range





● Full carbon superstructure

● Sunbathing area, dinette & whirlpool

● Retractable hidden anchor

● 24 sqm master cabin

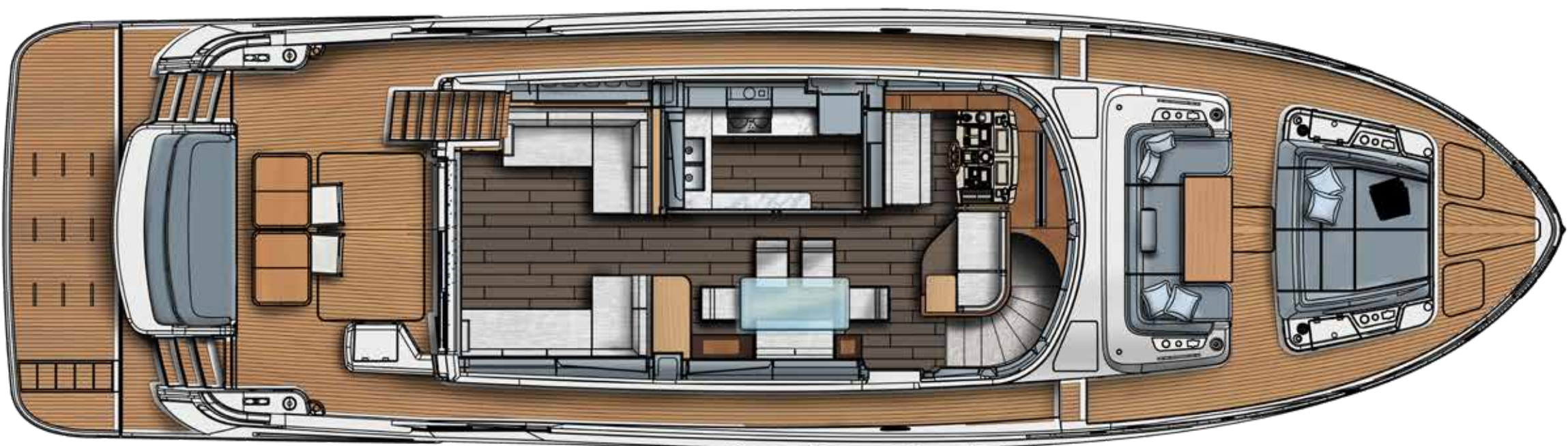
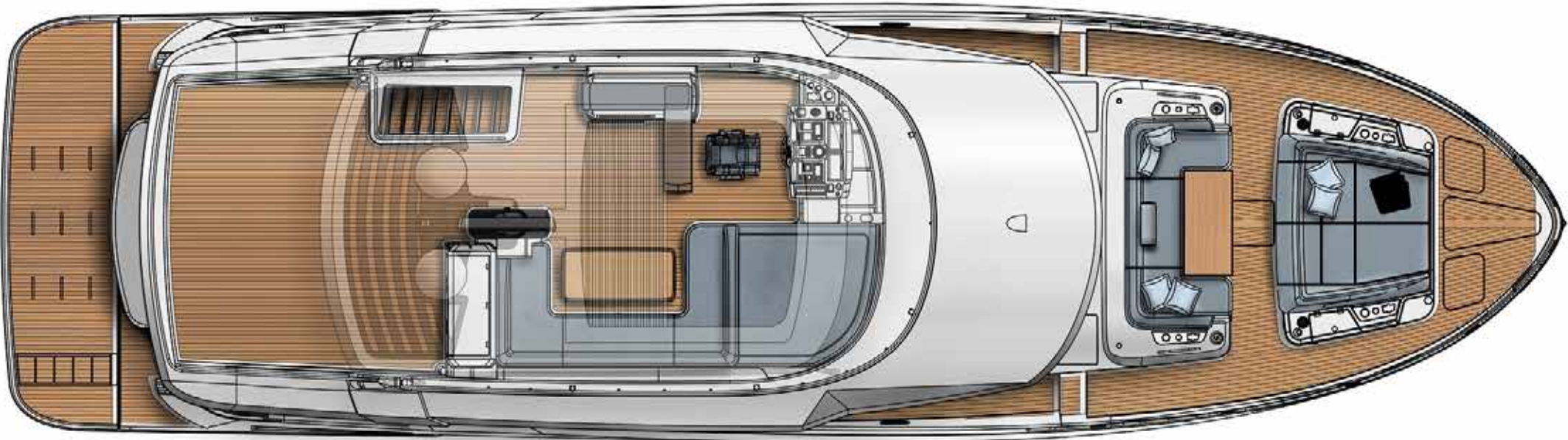


Dimensions and Main Characteristics

Length overall L_{OA} (Included swim platform exclude anchor roller)	20.74m / 68'
Hull length L_H ISO 8666 (Net GRP- swim platform excluded)	19.33m / 63'4"
Waterline length L_{WL} ISO 8666	19.06m (@ full load) / 62'5"
Hull beam B_{Hmax} ISO 8666	5.9m / 19'4"
Max draft - T_{MAX} ISO 8666	1.48m (@ full load) / 4'8"
Loaded displacement mass - mLDC ISO 8666	46 tonnes / 101,412 lbs
Height above the waterline H_a ISO 8666	6.33m (without equipment on top) / 20'8"
Light craft condition mass - $m_{LCC ISO}$ 8666	38 tonnes / 83,775 lbs
Diesel tank capacity	5,000l / 1320 gal
Fresh water tank	1,400l / 369 gal
Black water tank capacity	400l / 105 gal
Gray water tank capacity	400l / 105 gal
Cabins	3 standard + 1 (optional crew cabin)
Beds	6 + (2 crew)
Heads	4 + 1 (crew head)
Building material	GRP / Hybrid Carbon fiber
Hull type	Semi displacement
Exterior styling & concept	Frers Naval Architecture & Engineering
Interior decor	Design Studio Spadolini, styling by Cor D. Rover
Hull design	Frers Naval Architecture & Engineering

Engines	CAT C12.9 - 850HP x 2 CAT C12.9 - 1,000HP x 2 (optional)
Marine gears	ZF 335 IV ZF 500 IV (optional)
Reduction ratio	1.964:1
Transmission	V Drive
Propeller diameter(Max.)	860mm / 33.9"
Max speed	26 knots (with 850HP engine) 28 knots (with 1000HP engine)
Cruising speed	16 knots
Economy cruising speed	10 knots
Consumption @ cruising speed 16 kn	130l / hr / 34 gal / hr
Consumption @ 10 kn	38l / hr / 10 gal / hr
Range 10 kn (incl. 10% reservoir)	Approx. 1,200 Nm
Certification	CE Category A





Standard 3 Cabin Layout



Optional 4 Cabin Layout





www.sirenayachts.com

facebook.com/SirenaYachts instagram.com/sirenayachts

Abdi Ipekçi Cad. Ada Apt. No: 22/18 K: 5 | 34367 Nişantaşı / İstanbul
Tel: +90 212 219 74 74 | Fax: +90 212 219 15 82

This brochure does not, under any circumstances whatsoever, constitute any offer by the shipyard to any person nor may it be incorporated into any contract. Any and all information contained in this brochure, including, without limitation, all technical data, performance figures, illustrations and drawings, are just a rough guide only. The contents are in no way contractual and refer to standard models of sailing yachts built by the shipyard and have been updated by the shipyard as of the date of issue of the brochure. Therefore, the only indications binding on the seller are contained solely in the sale agreement and in the relevant specific manual. This brochure is based on information available at the date of issue. Notwithstanding all efforts to ensure accuracy, the information contained in the brochure may not cover all details, technical-commercial changes subsequent to the date of issue, nor accurately foresee or report all possible scenarios. Displays, photos, schemes, designs or examples contained in this brochure are solely and exclusively reproduced to highlight the information contained. Due to the different characteristics of each yacht, the shipyard declines any and all liability for any use thereof on the basis of the information contained in this brochure.